

Job Report: Crawler Excavator

R 926

Litronic®

Liebherr excavator
Generation 8 R 926
used by Hagedorn in Hamburg



LIEBHERR



Situation

The Hagedorn Group is an all-round service provider in the fields of demolition, waste disposal, civil engineering and land revitalisation. The group's process chain also includes the remediation of contaminated sites, recycling and materials flow management, the creation of industrial outdoor facilities and the development of new utilisation concepts. Today, this family-owned business founded in 1987 by Thomas Hagedorn employs more than 650 people. The group, which can now

look back on 24 years of experience, maintains a machine park consisting of Liebherr crawler excavators, wheeled loaders and bulldozers for earthmoving, Liebherr crawler cranes for lifting work and machines from other manufacturers. Some demolition and earthmoving machines are equipped with GPS guidance systems so that the areas can be worked on with great precision and ease.

Specific needs

The German city of Hamburg wanted to construct two new logistics hubs in its Wilhelmsburg district. With limited space on the designated site, the project manager brought in a French architect who had designed the world's first two-storied logistics hub in Paris. This innovative concept was adopted for this project.

To carry out the civil engineering work on the site and drain the accumulated rainwater from the flat roofs of the two buildings, the project manager commissioned Hagedorn, a company based in Gütersloh, Germany.

Solution

To handle this challenge, Hagedorn chose the Liebherr R 926 crawler excavator. A generation 8 model, this 27.5 tonne excavator with a phase V engine replaces our family-run company's generation 6 model of the same name. This generation consists of 7 models ranging from 22 to 45 tonnes that have been launched worldwide with a new design concept for optimum performance, comfort, ergonomics and safety.

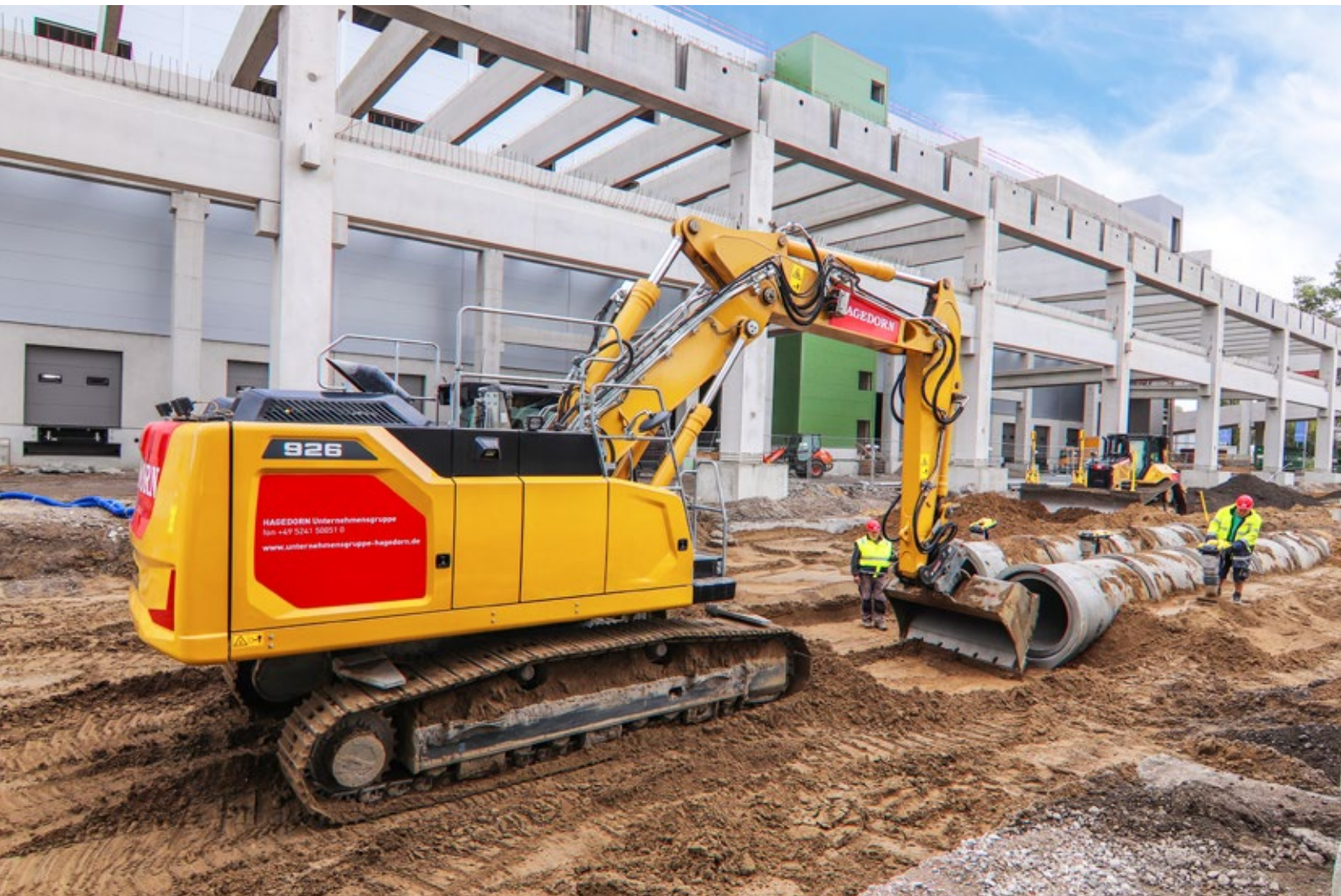
Michael Moritz is the R 926 G8's only driver. He uses this excavator to lay concrete pipes connecting the rainwater drains on the roofs of the two buildings to the collection station. To carry out this task, the excavator is equipped with a tiltable bucket to allow more accurate earthmoving work on a slope. The excavator is also fitted with a GPS guidance system to allow the pipes to be placed exactly as specified in plans.

Grotemeier, a Liebherr dealer based in Bünde, Germany, recommended this excavator to the Hagedorn group. Grotemeier guarantees satisfactory operation and handles after-sales service. The high-quality, fast service for the excavator provided by the franchise-holder's technicians on different sites is greatly appreciated by Hagedorn and allows the two companies to work well together.

Before this excavator was purchased, Michael Moritz operated a crawler excavator from one of our competitors. What he particularly appreciates, in addition to the new machine's superior performance and stability, is its comfortable cabin and flexibility of movement. The adjustable boom allows work handling concrete pipes with high lifting forces to be performed up close to the excavator. Both the driver and his colleagues working near the excavator greatly appreciate the new LED lighting, as this is more powerful and has a longer reach than the previous halogen system.

The R 926 combines performance superior to that of the previous model with a lower engine output of 150 kW. This also results in lower fuel consumption, ensuring the company's complete satisfaction. Hagedorn employee Michael Moritz must have had a lot of pleasure with this comfortable excavator during his last job.





Technical data

Operating weight	27,500 kg
Engine power	150 kW/204 hp
Exhaust emissions standard	V

Consumption

Fuel	14 litres/hour
------	----------------

Equipment

Two-piece boom	6.20 m
Hydraulic quick coupling system	SWA 48